



# BP Centre

## Inside this issue:

- BP Centre Head Shave** 2
- Earth Day Environment Week**
- Forever Green** 3
- Bentall Ride Share**
- Plaza Entertainment** 4
- Bike Cage/Shower Rooms**

Use a reel (cylinder) lawnmower. This needs no power supply, and is also much quieter for you and your neighbors.

NeighborhoodNeighborhood News

### Neighborhood News

Winter Gardens open in Jamieson Place on April 5

Jugo Juice opens in BP Centre on April 6

Café Chiasso in Jamieson Place opens mid April

## Upcoming Projects

The bi-annual building power shutdown has now been scheduled. The shutdown will take place starting at 8:00 am on June 26<sup>th</sup> until 2:00 pm on June 27<sup>th</sup>. Only emergency lighting, life safety systems and one elevator per bank will be powered during these times.

Now that renovations are almost complete on the +15 level, we will be turning our attention to "sprucing up" the main floor lobby. Plans are underway to bring elements of the newly renovated +15 level down to the main floor that would help to brighten up and modernize the retail storefronts, back hallway, and elevator lobbies. Construction is anticipated to start this summer.

Starting April 19<sup>th</sup> until August 31, 2010 we will be completing

an elevator modernization on our two shuttle elevators that provide access from P3 to the +15 level. The project will provide upgrades to the elevator controls and call buttons and there will be a complete modernization to the interior of the cabs. One cab will remain operational at all times and tenants should expect there to be a small delay during peak access times. Alternatively, there is stairwell access to the parkade on the ground floor of the building. You can access this stairwell by exiting the building on the northeast corner (by Citadel Café) and taking the door marked "Courier Entrance".

Further elevator interior modernization will continue in September 2010 as we bring our brand new look to the interior of six more elevator cabs.



*Our beautiful planet*



*Majestic and glorious*

## Welcome to Jugo Juice

BP Centre is excited to welcome its first "brand new" tenant to the newly renovated +15 level. Jugo Juice has completed their construction and plans on being open for business the first week of April. Jugo Juice offers a large variety of blended healthy fruit smoothies, juices, and healthy

fast food alternatives and is a great addition to the services that are already provided in the building.

You can find Jugo Juice on the West side of BP Centre across from Tim Hortons and beside the security office.



# BP centre

## BP Centre 11th Annual Head Shave for Cancer

BP Centre is proud to once again sponsor the "Annual Head Shave for Cancer" on June 16, 2010. This year we are planning an even bigger event and have asked Livingston Place to co-sponsor with us. We will be holding the event in the Livingston Place Plaza area and will have live musical entertainment for you to enjoy while the participants "lose their locks" for charity.

Last year's event saw twenty three individuals shave their heads and raised over \$20,000 for the Canadian Cancer Society. This year we hope to raise even more money as we challenge Livingston Place to meet or exceed the donations of BP Centre.

and help support the Canadian Cancer Society. Should your organization wish to participate in this event, please contact Michael Cole, Property Manager, at [mcole@bentall.com](mailto:mcole@bentall.com).

The event is open to anyone who wants to participate and we encourage you and your organization to share in the fun



## Earth Day and Environment Week

On Thursday, April 22nd, we will celebrate the 40th Anniversary of Earth Day. The first Earth Day was held on April 22, 1970 and was founded by Senator Gaylord Nelson. The idea for earth Day evolved over a period of several years when the senator became concerned that the environment was a non-issue in the politics of the country. For several years he toured the country speaking on environmental issues and it was at a conference in Seattle Washington, he announced that in the spring of 1970 there would be a nationwide grassroots demonstration on behalf of the environment. The wire service carried the news from coast to coast and the response was electric. Today over 175 countries and 1 billion participate in Earth

Day.

BP Centre will be celebrating Earth Day with a Recycling Roundup in the Recycling Centre on the P1 level of the Parkade. Please bring your recycling items in between 11:00am and 1:30pm – the first 50 people will receive a planet-friendly prize!

with a host of activities and incentives. Some of the plans we have for this year are:

- Honoring transit users by providing a small breakfast with proof of transit use
  - Information Display Tables on the +15 level of the West Tower of Livingston Place
  - "Great Monitor Shutdown Challenge" for all Tenants
  - Lunch and Learn in the Conference Centre – Topic TBD
- Specialized Recycling Roundups – styrofoam, toners, and more

For more information on what items are accepted in our Extended Recycling Program, please go to [www.bp-centre.com.com](http://www.bp-centre.com.com) or contact our Tenant Services Manager, **T o n y M a c k e y**, [tmackey@bentall.com](mailto:tmackey@bentall.com).

*Environment Week – May 30 to June 5, 2010*

We will be celebrating Environment Week again this year

More information will be circulated and advertised throughout the building closer to Environment Week.



*Walk, cycle, take transit*



# Bentall's Forever Green Program

As part of Bentall LP's Forever Green program, Bentall is committed to strategically developing and continually improving environmentally best practices with regard to our managed properties and the impact they have on the communities where we do business. The protection of the environment and support for the community is a core value from which all of our services are delivered.

Bentall's Environmentally Preferable Purchasing program (EPP) is one example of how we are reducing the environmental footprint of our business activities. Forever Green is the foundation of our Responsible Property Management principles. It embodies nine elements that illustrate our environmental initiatives: Sustainability, Indoor Environ-

ment, Energy Efficiency, Reduce Recycle Reuse, Community Involvement, Tenant Cooperation, Green House Gas Emissions, Zero Waste and Achievement. Each of these elements has been considered in the creation of our Forever Green purchasing Program.

By developing an EPP program, Bentall reinforces its commitment to sustainability by recognizing that the wise use of our purchasing power can be a major contributor on the impact of our environment. How do we do this? By purchasing products and services that meet conventional technical performance requirements like durability, quality, performance and safety. This minimizes environmental impacts.

EPP involves incorporating environmental criteria into traditional purchasing considerations such as price, performance and availability. Bentall is a major purchaser of products, such as lighting supplies, and other services and we recognize the influence that our purchasing decisions have on the environment. With this influence we want to encourage and promote markets for Environmentally Preferable Products through the adoption of innovative standards while remaining fiscally responsible and certify the continued efficient operation of our day-to-day activities.

For more information on Bentall's initiatives that fall under the "Forever Green Banner", please visit

[www.bentall.com/forevergreen](http://www.bentall.com/forevergreen)

**FOREVERGREEN**  
Responsible Property Management

**Bentall**  
Our foundation is service

# Bentall Ride Share Program

Bentall LP's newest Forever Green initiative is a new program called Ride Share which we plan to launch within the next two months. Our goal is to have it up and running in time for Environment Week.

The program will be accessible via the building website at [www.bp-centre.com](http://www.bp-centre.com). Located

there will be a link to the program that you can use to find or offer car pooling services. There are approximately 2500 people that work in the building. Just imagine the impact we could have by car pooling to work. Besides, we all want to get to the same place. As soon as this program is rolled out we will advise you. We are

constantly striving to implement new environmentally friendly initiatives. If you have any ideas you would like to see implemented or make a suggestion on additional recycling, you can do that by visiting the website and entering it into the suggestion box.



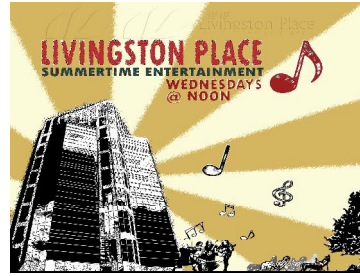
**Research biodiesel.**  
This is a diesel made from a percentage of plant and animal fat (in some cases reused fat).

EARTH FRIENDLY



## Plaza Entertainment

We are excited to announce that we will be continuing with the lunch time Plaza Entertainment in the Livingston Place Plaza each Wednesday during the noon hour. The entertainment will start up in June and last until the end of August. We are also hoping to retain a food service



provider to set up on the plaza throughout the summer months to offer reasonably priced food options.

## Bike Cage and Shower/Locker Rooms

The BP Centre Bike Cage is located on the P1 level of the parkade. For entry to the bike cage, a tenant must go in through the parkade doors (same as a vehicle) and follow the cyclist signs. Remember to carry your card as the doors will be closed after hours and entry to the parkade is gained only through card swipe. Once inside the parkade, follow the cyclist path to the P1 level

Bike Cage. There, you will need to swipe your card to gain access. Please remember to bring your own lock to secure your bike once inside and stationed.

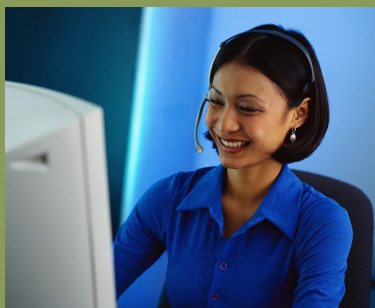
Accessible by card access only, the main floor Shower/Locker Rooms are only available to the tenants of BP Centre and are located on the main floor. They are

accessible by card swipe and the Terms of Use are stated on signage as you enter. Make sure to read them as they are very informative. The lockers are only for day use and bring your own lock as none are provided. Towel service is an amenity available to all those who wish to use the shower/locker rooms.

## ClikFIX...

### Bentall's Tenant Service Contact Centre

- Lighting & Electrical
- Security • Plumbing
- Heating & Air Conditioning
- Fire & Life Safety
- Housekeeping • Parking
- Construction • Recycling
- Shipping & Receiving
- Landscaping
- Moves • Locks
- Repairs & Modifications
- Leasing Inquiries



*ClikFIX is Bentall's tenant service contact centre.*

*Designed to make it easy for you, ClikFIX provides a central resource for your service needs.*

*You can either phone, email, or simply "Clik" and log your service request online.*

*ClikFIX personnel are available 24 hours per day, 7 days a week to receive your request.*

*Placing a service request is easy with ClikFIX. Regardless of the size of your space or type of property you occupy, we are here to serve you.*

Whether it's on-line, by phone, or email, ClikFIX can take care of all your service needs.